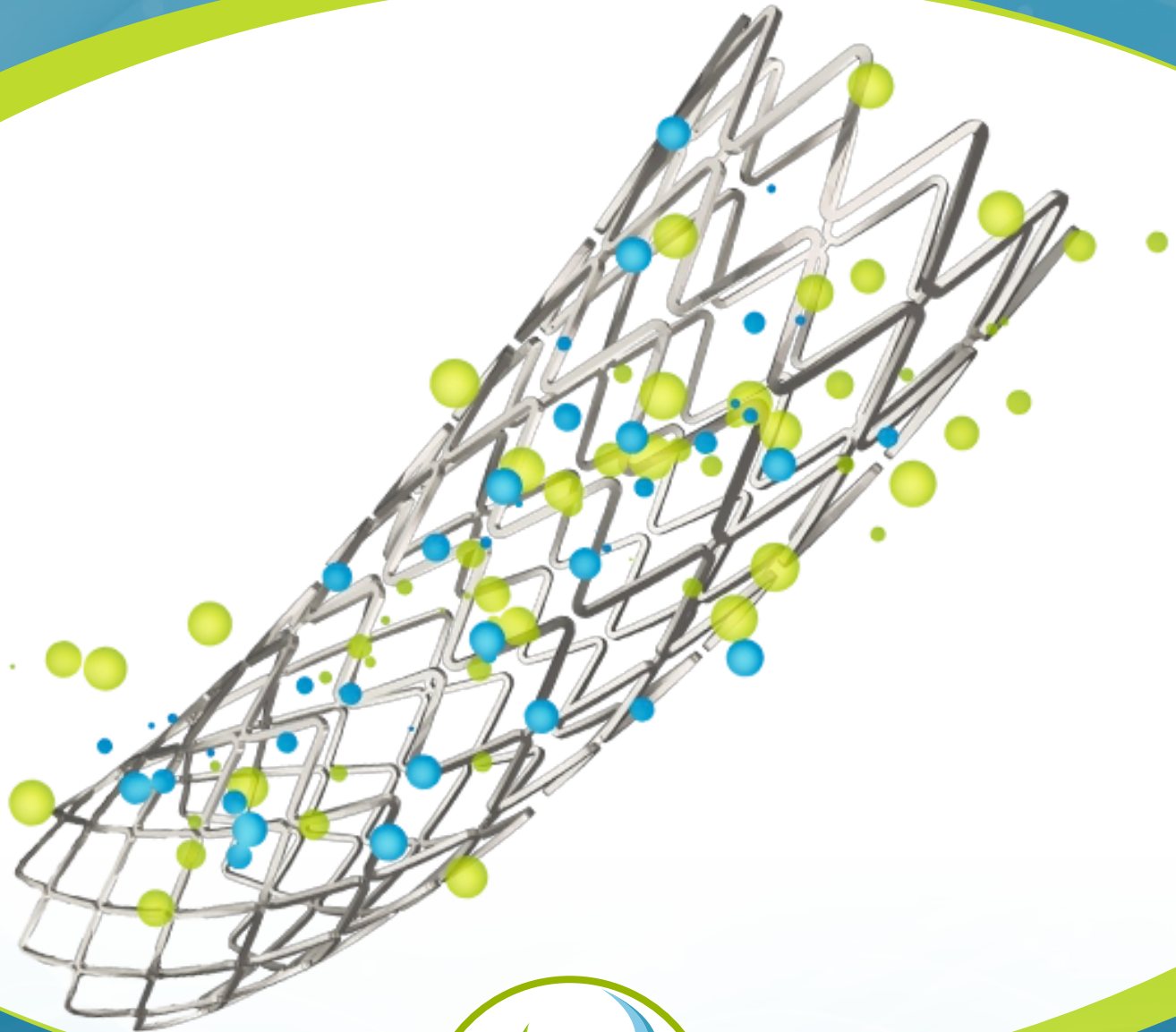


SAH TRACK™

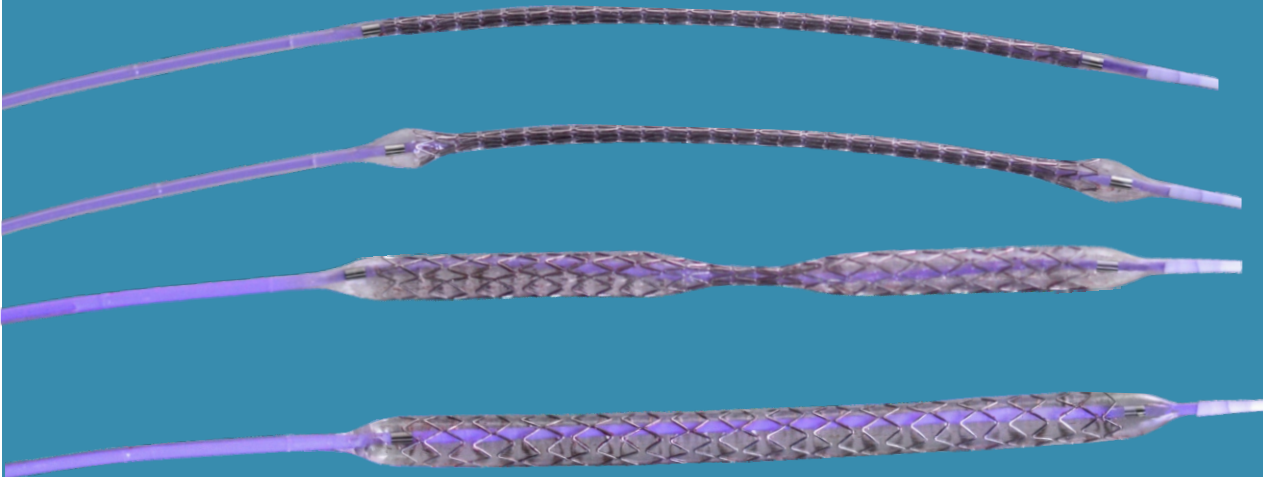
TRACK SRL

Sirolimus Eluting Coronary Stent System

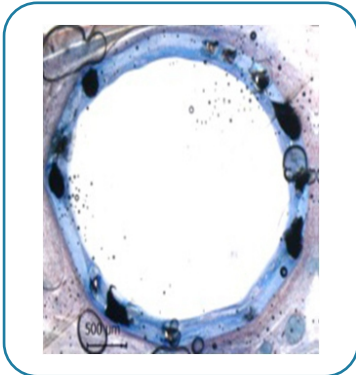


Sah Health Care Pvt. Ltd.

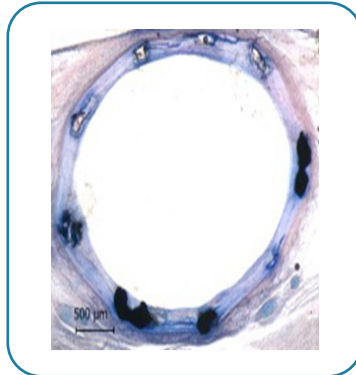
Dog Bone Balloon Inflation Pattern



Histomorphometric Cross Sectional Images of Sirolimus Eluting Coronary Stent at 1 month in Porcine Models



LAD - Promimal

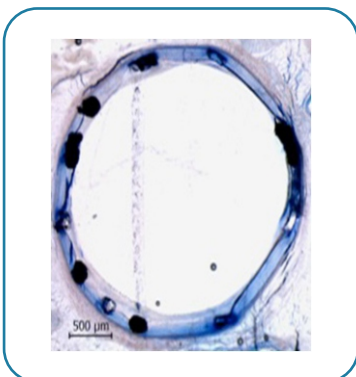


LAD - Distal

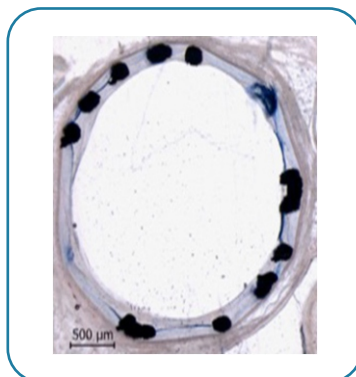


LAD - Mid

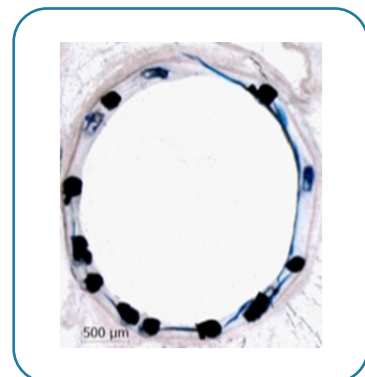
Histomorphometric Cross Sectional Images of Sirolimus Eluting Coronary Stent at 1 month in Porcine Models



LCX - Promimal



LCX - Mid



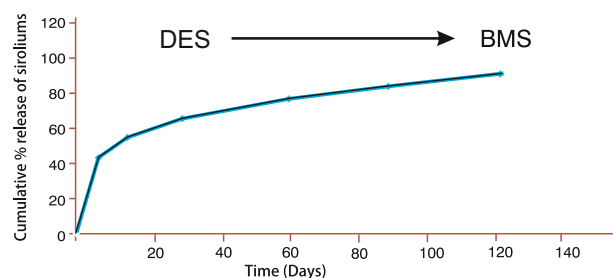
LCX - Distal

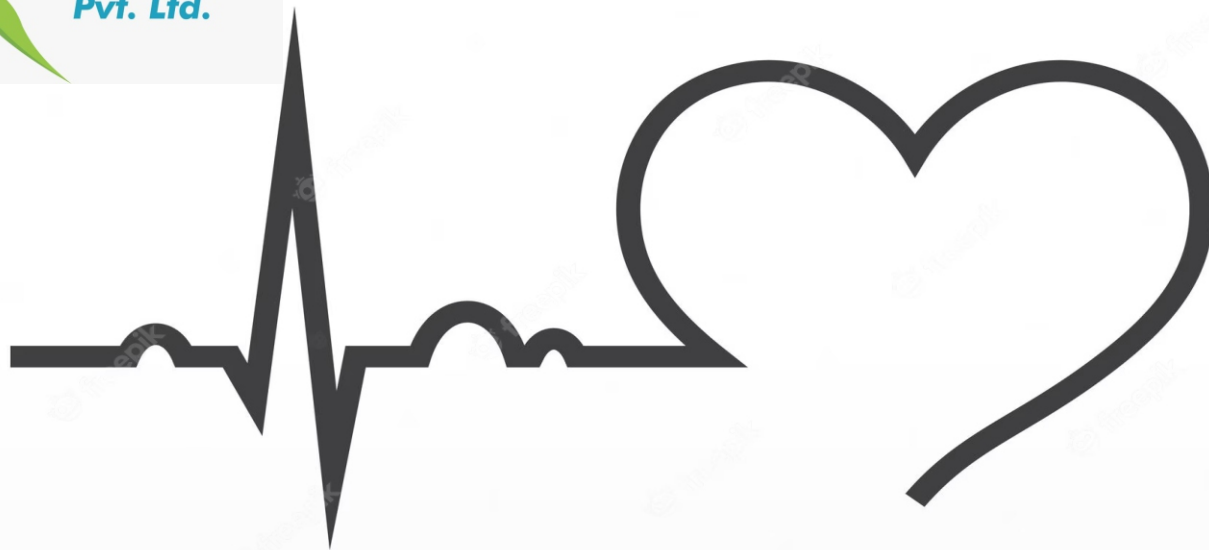
- L 605 cobalt-chromium stent platform with open and closed cell design
- Unique stent design and strut locking mechanism offers excellent radial strength and minimal recoil.
- Uniform neointimal coverage and improved stent apposition
- Completely biodegradable, biocompatible polymer (PLA carrier) -Loading dose density of 1.20 $\mu\text{g}/\text{mm}^2$
- 3 μm - uniform coating thickness with precisely programmed release kinetics
- Complete endothelialization within 180 days for drug release. In presence of drug how complete endothelialization happened.
- 90% of sirolimus is released within 90 to 120 days
- Inhibits in-stent restenosis (ISR) and Late stent thrombosis with adequate re- endothelialization
- Designed for utmost safety - Premier displays one of the lowest entry profiles
- Hydrophilic coated stent delivery system

Technical Specifications of TRACK SRL

Parameter	Specification
Available Stent Lengths	10, 13, 15, 18, 20, 24, 28, 32, 36, 40, 44 and 48mm
Available Stent Diameters	2.25, 2.50, 2.75, 3.00, 3.50 and 4.00mm
Stent Design	Open and Closed
Stent Platform	Co Cr (L605 Cobalt Chromium)
Stent Strut Thickness	63 μm
Stent Foreshortening	< 2%
Recoil	< 4%
Drug	Sirolimus
Delivery System	Hydrophilic Coated
Polymer Type	Biodegradable (PLA)
Coating Thickness	3 μm

In Vitro Release Kinetics of
TRACK SRL
 Sirolimus Eluting Coronary Stent System





Ordering Information

Diameter (mm)/ Length (mm)	2.25	2.50	2.75	3.00	3.50	4.00
10	TRA2250-10	TRA2500-10	TRA2750-10	TRA3000-10	TRA3500-10	TRA4000-10
13	TRA2250-13	TRA2500-13	TRA2750-13	TRA3000-13	TRA3500-13	TRA4000-13
15	TRA2250-15	TRA2500-15	TRA2750-15	TRA3000-15	TRA3500-15	TRA4000-15
18	TRA2250-18	TRA2500-18	TRA2750-18	TRA3000-18	TRA3500-18	TRA4000-18
20	TRA2250-20	TRA2500-20	TRA2750-20	TRA3000-20	TRA3500-20	TRA4000-20
24	TRA2250-24	TRA2500-24	TRA2750-24	TRA3000-24	TRA3500-24	TRA4000-24
28	TRA2250-28	TRA2500-28	TRA2750-28	TRA3000-28	TRA3500-28	TRA4000-28
32	TRA2250-32	TRA2500-32	TRA2750-32	TRA3000-32	TRA3500-32	TRA4000-32
36	TRA2250-36	TRA2500-36	TRA2750-36	TRA3000-36	TRA3500-36	TRA4000-36
40	TRA2250-40	TRA2500-40	TRA2750-40	TRA3000-40	TRA3500-40	TRA4000-40
44	TRA2250-44	TRA2500-44	TRA2750-44	TRA3000-44	TRA3500-44	TRA4000-44
48	TRA2250-48	TRA2500-48	TRA2750-48	TRA3000-48	TRA3500-48	TRA4000-48

POCKET C- 565 PAPER MARKET
IFC, GHAZIPUR MAYUR VIHAR
PHASE - 3 DELHI 110096
Mob No +91 88511 91088

Contact Our Health Care Representatives:
sahhealthcarepvtltd@gmail.com
Mobile No. +91 88511 91088

Find Out More:
www.sahhcare.com
Tell : +91 99900 45799